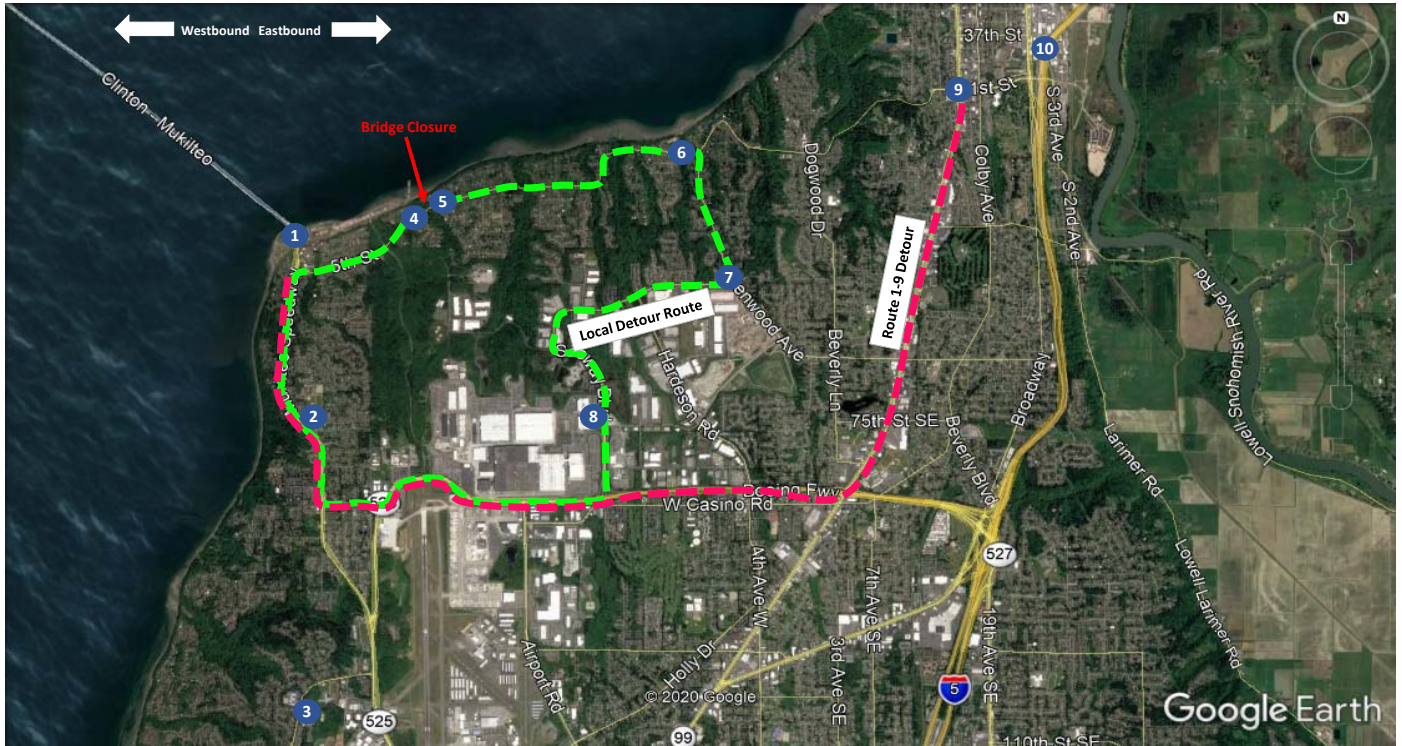


## Travel Time Increases With Bridge Closure



Travel times may vary +/- 15% depending on driver behavior and typical variations in signal timings.

		Existing Travel Time (+Detour Increase) - AM Peak (7 AM)										
		Destination Point										
		1	2	3	4	5	6	7	8	9	10 via I-5	10 via Muk Blvd
Origin Point	1	-	-	-	-	4 (+20)	8 (+12)	10 (+8)	-	14 (+8)	18 (+<1)	18 (+8)
	2	-	-	-	-	6 (+14)	9 (+7)	12 (+2)	-	16 (+2)	12 (+<1)	22 (+2)
	3	-	-	-	-	14 (+8)	18 (+<1)	-	-	-	-	-
	4	-	-	-	-	1 (+23)	4 (+16)	6 (+12)	12 (+2)	12 (+12)	-	16 (+10)
	5	4 (+18)	7 (+11)	18 (+8)	1 (+21)	-	-	-	12 (+2)	-	-	-
	6	7 (+11)	10 (+6)	22 (+2)	4 (+16)	-	-	-	-	-	-	-
	7	12 (+4)	14 (+<1)	-	7 (+11)	-	-	-	-	-	-	-
	8	-	-	-	12 (+<1)	12 (+<1)	-	-	-	-	-	-
	9	14 (+6)	16 (+2)	-	10 (+10)	-	-	-	-	-	-	-
	10 via I-5	16 (+<1)	14 (+<1)	-	-	-	-	-	-	-	-	-
10 via Muk Blvd	18 (+6)	20 (+2)	-	14 (+10)	-	-	-	-	-	-	-	

		Existing Travel Time (+Detour Increase) - Noon										
		Destination Point										
		1	2	3	4	5	6	7	8	9	10 via I-5	10 via Muk Blvd
Origin Point	1	-	-	-	-	4 (+20)	8 (+12)	12 (+6)	-	16 (+10)	18 (+<1)	20 (+8)
	2	-	-	-	-	6 (+12)	10 (+6)	12 (+<1)	-	18 (+2)	12 (+<1)	22 (+2)
	3	-	-	-	-	14 (+6)	18 (+<1)	-	-	-	-	-
	4	-	-	-	-	1 (+23)	4 (+16)	6 (+12)	10 (+4)	12 (+14)	-	16 (+2)
	5	5 (+17)	6 (+12)	14 (+8)	1 (+21)	-	-	-	10 (+<1)	-	-	-
	6	8 (+12)	10 (+6)	18 (+<1)	4 (+16)	-	-	-	-	-	-	-
	7	10 (+8)	12 (+2)	-	6 (+12)	-	-	-	-	-	-	-
	8	-	-	-	12 (+<1)	12 (+<1)	-	-	-	-	-	-
	9	14 (+10)	16 (+6)	-	10 (+14)	-	-	-	-	-	-	-
	10 via I-5	18 (+<1)	14 (+<1)	-	-	-	-	-	-	-	-	-
10 via Muk Blvd	18 (+10)	20 (+4)	-	14 (+4)	-	-	-	-	-	-	-	

		Existing Travel Time (+Detour Increase) - Boeing Peak (2 PM)										
		Destination Point										
		1	2	3	4	5	6	7	8	9	10 via I-5	10 via Muk Blvd
Origin Point	1	-	-	-	-	4 (+22)	8 (+16)	10 (+10)	-	16 (+19)	24 (+<1)	22 (+18)
	2	-	-	-	-	5 (+17)	9 (+11)	10 (+8)	-	18 (+8)	18 (+<1)	24 (+11)
	3	-	-	-	-	16 (+10)	18 (+4)	-	-	-	-	-
	4	-	-	-	-	1 (+27)	4 (+20)	6 (+16)	16 (+<1)	12 (+23)	-	18 (+22)
	5	4 (+22)	5 (+17)	16 (+12)	1 (+27)	-	-	-	14 (+2)	-	-	-
	6	8 (+14)	9 (+9)	18 (+6)	4 (+20)	-	-	-	-	-	-	-
	7	10 (+8)	10 (+4)	-	6 (+14)	-	-	-	-	-	-	-
	8	-	-	-	14 (+<1)	14 (+<1)	-	-	-	-	-	-
	9	14 (+12)	16 (+6)	-	10 (+18)	-	-	-	-	-	-	-
	10 via I-5	18 (+<1)	14 (+<1)	-	-	-	-	-	-	-	-	-
10 via Muk Blvd	18 (+17)	20 (+8)	-	14 (+21)	-	-	-	-	-	-	-	

		Existing Travel Time (+Detour Increase) - PM Peak (5 PM)										
		Destination Point										
		1	2	3	4	5	6	7	8	9	10 via I-5	10 via Muk Blvd
Origin Point	1	-	-	-	-	4 (+20)	9 (+13)	12 (+6)	-	16 (+10)	24 (+<1)	24 (+11)
	2	-	-	-	-	6 (+14)	10 (+8)	12 (+2)	-	18 (+4)	26 (+<1)	24 (+4)
	3	-	-	-	-	14 (+8)	18 (+<1)	-	-	-	-	-
	4	-	-	-	-	1 (+25)	4 (+18)	7 (+13)	14 (+<1)	12 (+16)	-	20 (+15)
	5	4 (+20)	6 (+14)	14 (+8)	1 (+25)	-	-	-	14 (+<1)	-	-	-
	6	8 (+12)	9 (+7)	18 (+<1)	4 (+18)	-	-	-	-	-	-	-
	7	10 (+8)	12 (+2)	-	7 (+11)	-	-	-	-	-	-	-
	8	-	-	-	14 (+<1)	14 (+<1)	-	-	-	-	-	-
	9	14 (+10)	16 (+4)	-	10 (+16)	-	-	-	-	-	-	-
	10 via I-5	18 (+<1)	14 (+<1)	-	-	-	-	-	-	-	-	-
10 via Muk Blvd	18 (+10)	20 (+6)	-	14 (+16)	-	-	-	-	-	-	-	

Point	Description
1	Downtown Mukilteo (Mukilteo Blvd & Front St)
2	Olympic View Middle School
3	Kamiak High School
4	West End of Edgewater Bridge
5	East End of Edgewater Bridge
6	Maple Heights Bridge
7	Glenwood Ave & Merrill Creek Pkwy
8	Boeing Entrance (Seaway & 75th St)
9	Evergreen Way & 41st St
10	I-5 North of 41st St

**Notes:**

- Red shaded boxes denote increases greater than 50% from existing, pre-closure travel time.
- All increases are based on difference from high travel time estimates from Google Maps for the respective route pairs.
- Primary local detour route would be SR-526/Seaway Blvd/Merrill Creek Pkwy/Glenwood Ave as shown in green on map.
- Route 1-10 via Mukilteo Blvd assumes the detour route would be Evergreen Way. Change to SR-526/I-5 travel time is expected to be negligible (1-10 via I-5).
- All routes including time point 9 assume Evergreen Way as the detour route.