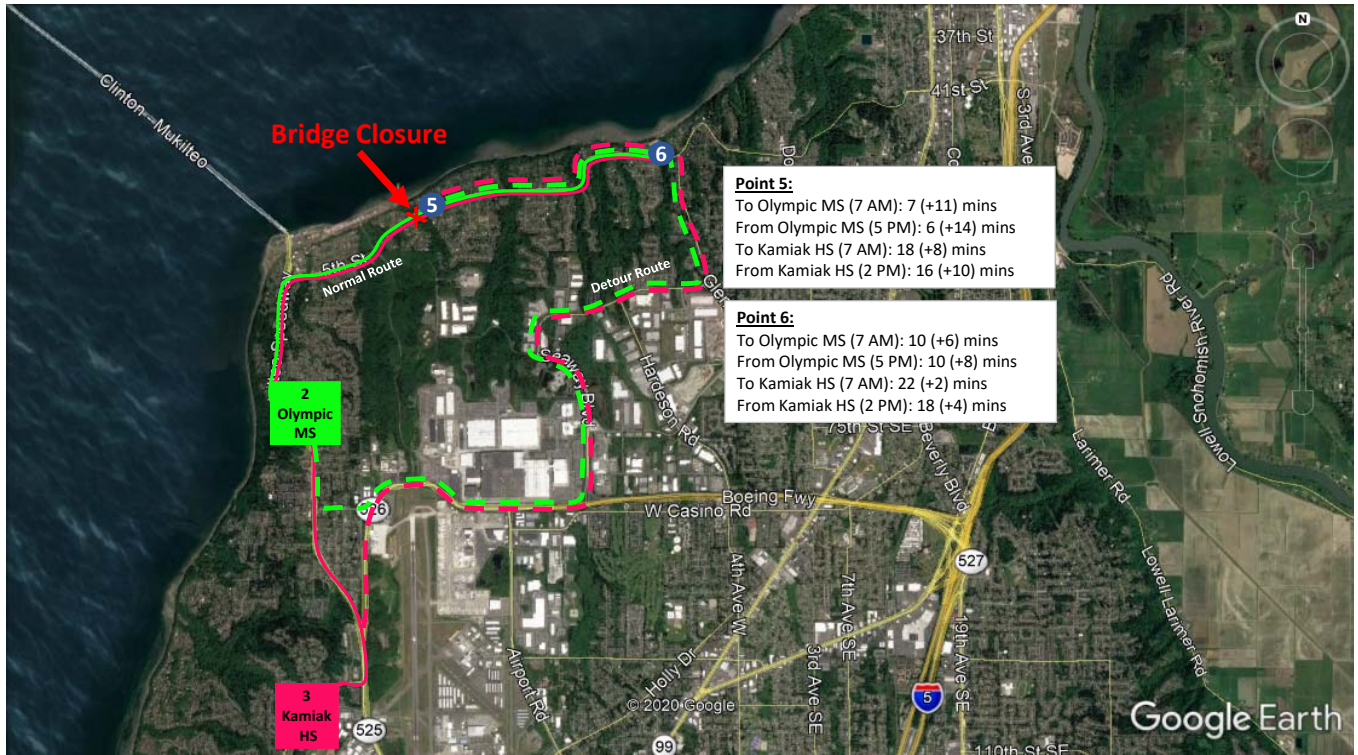


Travel Time Increases With Bridge Closure (School Points)

All times are approximations, real world conditions may vary



Travel times may vary +/- 15% depending on driver behavior and typical variations in signal timings.

Existing Travel Time (+Detour Increase) - AM Peak (7 AM)					
		Destination Point			
		2	3	5	6
Origin Point	2, Olympic MS	-	-	6 (+14)	9 (+7)
	3, Kamiak HS	-	-	14 (+8)	18 (<1)
	5	7 (+11)	18 (+8)	-	-
	6	10 (+6)	22 (+2)	-	-

Existing Travel Time (+Detour Increase) - Noon					
		Destination Point			
		2	3	5	6
Origin Point	2, Olympic MS	-	-	6 (+12)	10 (+6)
	3, Kamiak HS	-	-	14 (+6)	18 (<1)
	5	6 (+12)	14 (+8)	-	-
	6	10 (+6)	18 (<1)	-	-

Existing Travel Time (+Detour Increase) - Boeing Peak (2 PM)					
		Destination Point			
		2	3	5	6
Origin Point	2, Olympic MS	-	-	5 (+17)	9 (+11)
	3, Kamiak HS	-	-	16 (+10)	18 (+4)
	5	5 (+17)	16 (+12)	-	-
	6	9 (+9)	18 (+6)	-	-

Existing Travel Time (+Detour Increase) - PM Peak (5 PM)					
		Destination Point			
		2	3	5	6
Origin Point	2, Olympic MS	-	-	6 (+14)	10 (+8)
	3, Kamiak HS	-	-	14 (+8)	18 (<1)
	5	6 (+14)	14 (+8)	-	-
	6	9 (+7)	18 (<1)	-	-

Point	Description
2	Olympic View Middle School
3	Kamiak High School
5	East End of Edgewater Bridge
6	Maple Heights Bridge

Notes:

- Red shaded boxes denote increases greater than 50% from existing, pre-closure travel time.
- All increases are based on high estimates from Google Maps for the respective route pairs.
- Primary local detour route would be SR-526/Seaway Blvd/Merrill Creek Pkwy/Glenwood Ave as shown in map.