

# CITY OF EVERETT'S Public Right-of-Way ADA Transition Plan



## We are working on our 2021 Public Right-of-Way (ROW) ADA Transition Plan and need your input!

We're asking for feedback to finalize the 2021 Public ROW ADA Transition Plan. Please visit our online open house at [everettwa.gov/ADAopenhouse](http://everettwa.gov/ADAopenhouse) for more information and to report a barrier in your neighborhood.

### 1990 Americans with Disabilities Act

The Americans with Disabilities Act (ADA), enacted on July 26, 1990, provides comprehensive civil rights protections to persons with disabilities. Title II of the ADA requires public transportation, state and local government agencies to ensure that their programs, services and facilities are accessible to individuals with disabilities.

### Public ROW ADA Transition Plan

A Public ROW ADA Transition Plan is intended to provide a framework for the continuous improvement of pedestrian facilities (such as sidewalks, paths, curb ramps and pedestrian signals/push buttons) within the city ROW to ensure accessibility for people with disabilities.

There are four key requirements of an ADA Transition Plan: Identifying physical barriers in pedestrian facilities; describing in detail how the barriers will be removed; specifying a schedule for removing these barriers; and identifying the official responsible for implementing the transition plan.

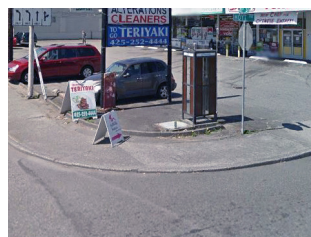
### To address these requirements, the City of Everett's Public ROW ADA Transition Plan contains:

- ▶ A self-evaluation describing how the City created and evaluated the inventory of barriers and how the inventory will be updated
- ▶ A methodology describing the barrier removal process, including repairs, maintenance and replacing existing pedestrian facilities
- ▶ A program description, including prioritization criteria and schedule containing:
  - A prioritized list of barrier removal projects
  - An annual Pavement Maintenance Program
  - Capital and Transportation Improvement Projects
- ▶ ADA Compliance Team information

### Barriers

Types of barriers in pedestrian facilities include cracked or uneven sidewalks, obstructions in the sidewalk, missing or noncompliant curb ramps, and existing pedestrian signals with missing, inaccessible or inaudible pedestrian push buttons.

Hoyt & 41st  
Before



After



Source: US Census Bureau

### Timeline

- **March 2021**
  - Online open house and public outreach
- **April 2021**
  - Final ADA Transition Plan publication
- **April 2022**
  - Annual plan update

### Learn more and give your input

Visit the **Online Open House** for more information or to report a barrier.

Attend a **virtual presentation** at Everett's Transportation Advisory Committee meeting on March 18 at 8 a.m.