

What and where are the NB zones?

The *Neighborhood Business* (NB) zone is characterized as:

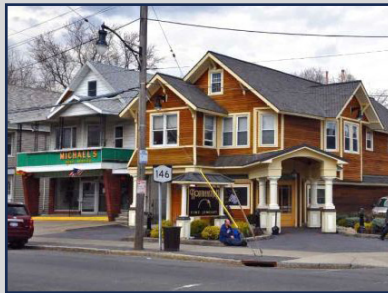
- A mix of small-scale business oriented to the surrounding neighborhood and residential development
- Node sizes range from 1/2 acre to a 3 acres
- Typically surrounded by residential uses and zoning

What are the NB standards?

The NB designation would allow uses compatible with surrounding residential development.

- Three to four floor height maximums
- No front setback
- Side and rear setbacks apply when not abutting an alley
- Design standards to encourage compatibility with surrounding residential uses

What types of uses might be allowed in the Neighborhood Business zone?



Historic neighborhood store



Food and beverage



Neighborhood market

RETHINK ZONING

Let's rethink together

everettwa.gov/rethink

City of Everett

2930 Wetmore Ave., Ste. 8-A

Everett, WA 98201, USA

425.257.8731